

TOWER 7 5/F

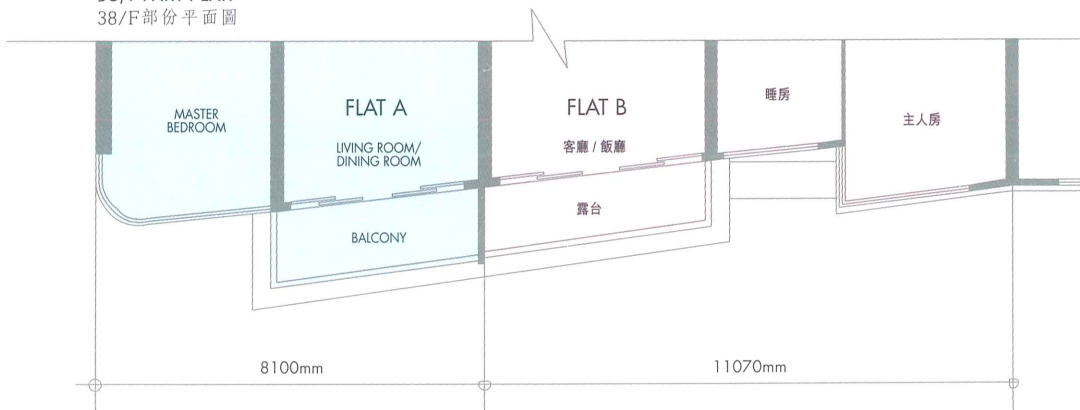


↓ Panoramic Ocean View ↓
無邊際遠洋景

TOWER 7 6-38/F



38/F PART PLAN
38/F部份平面圖



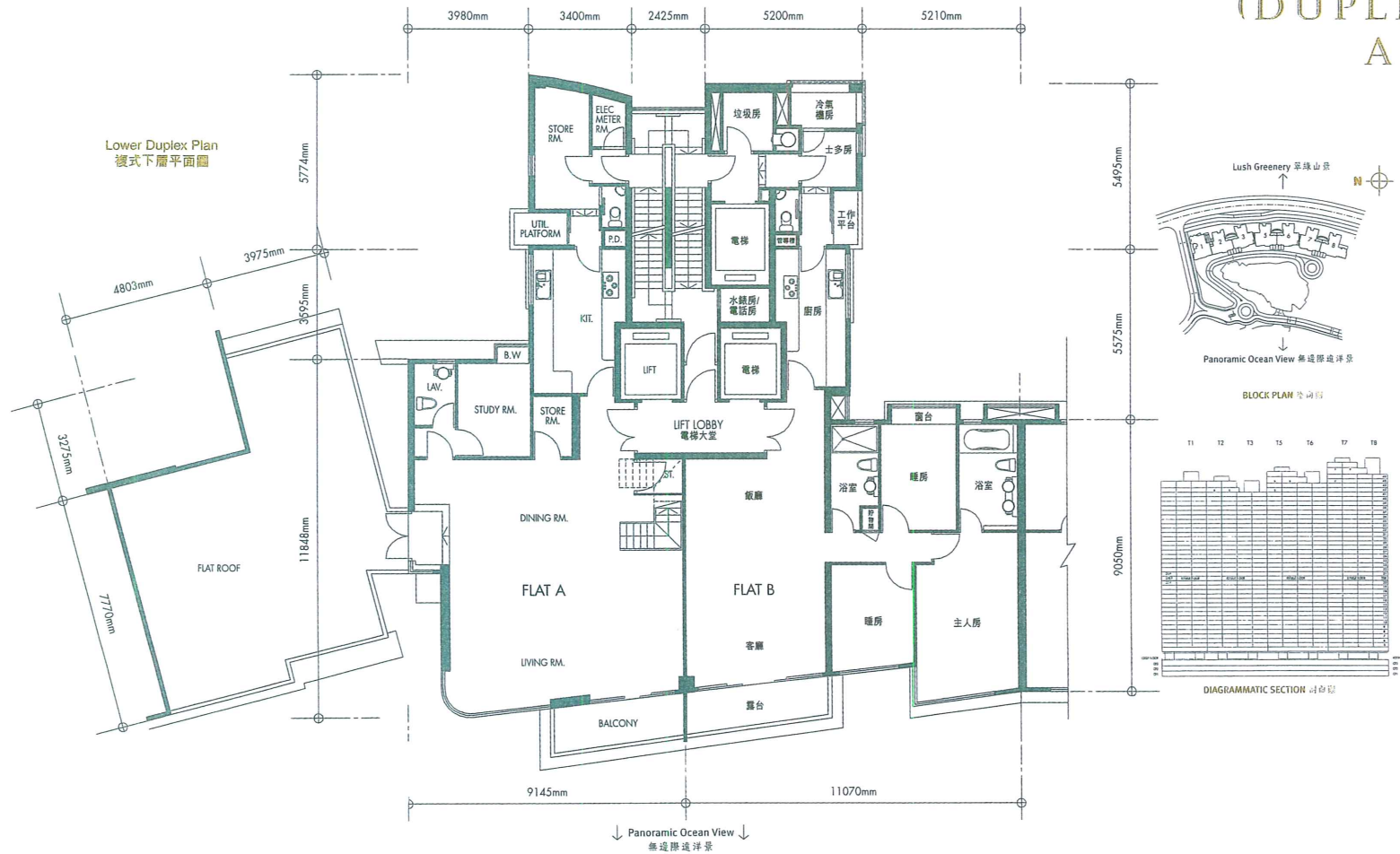
↓ Panoramic Ocean View ↓
無邊際遠洋景

TOWER 7 39-43/F (SIMPLEX UNITS)



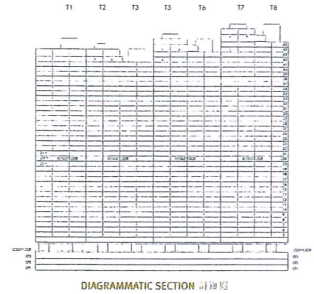
↓ Panoramic Ocean View ↓
無邊際遠洋景

TOWER 7 45/F (DUPLUX UNIT & APEX UNIT)



- All plans are subject to final approval by the relevant Government Authorities.
- All dimensions are for reference only.
- Information contained herein is for reference only. All information shall be subject to the terms and conditions of the Agreement for Sale and Purchase. In case of any conflict between the English version and Chinese version of the contents, the English version shall prevail.
- Balcony and Utility Platform are Non-enclosed Areas.
- The internal areas of units on upper floors may be slightly larger than lower floors due to the reducing thickness of structural walls on those floors.
- Architectural features are on external walls of some of the floors.
- 20R/F (which is the floor between 20/F and 21/F) is the refuge floor.
- The floor numberings are such that there are no 14/F, 24/F, 34/F and 44/F.
- For fittings & finishes schedule and information for reference, please refer to the sales brochure.
- 詳細訂正圖則以政府有關當局最後批准之圖則為準。
- 圖中所有長度單位只供參考用途。
- 所有資料僅供參考之用，所有內容，一律根據買賣合約所訂的版本為準。中英文版本文字可能有異，唯一內容仍以英文版本為準。
- 露台及工作平台為非圍封範圍。
- 高層單位的室內面積可能較低層單位稍大，因其結構牆比低層單位較薄。
- 部份樓層外牆範圍設有建築裝飾。
- 20R/F (即20/F及21/F之間)為避火層。
- 物業不設有14/F、24/F、34/F及44/F之樓層。
- 所有裝修用料說明及參考資料，請參閱售樓書。

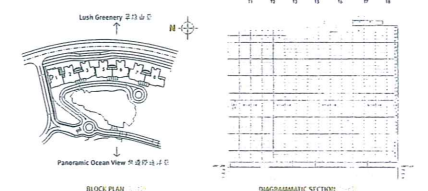
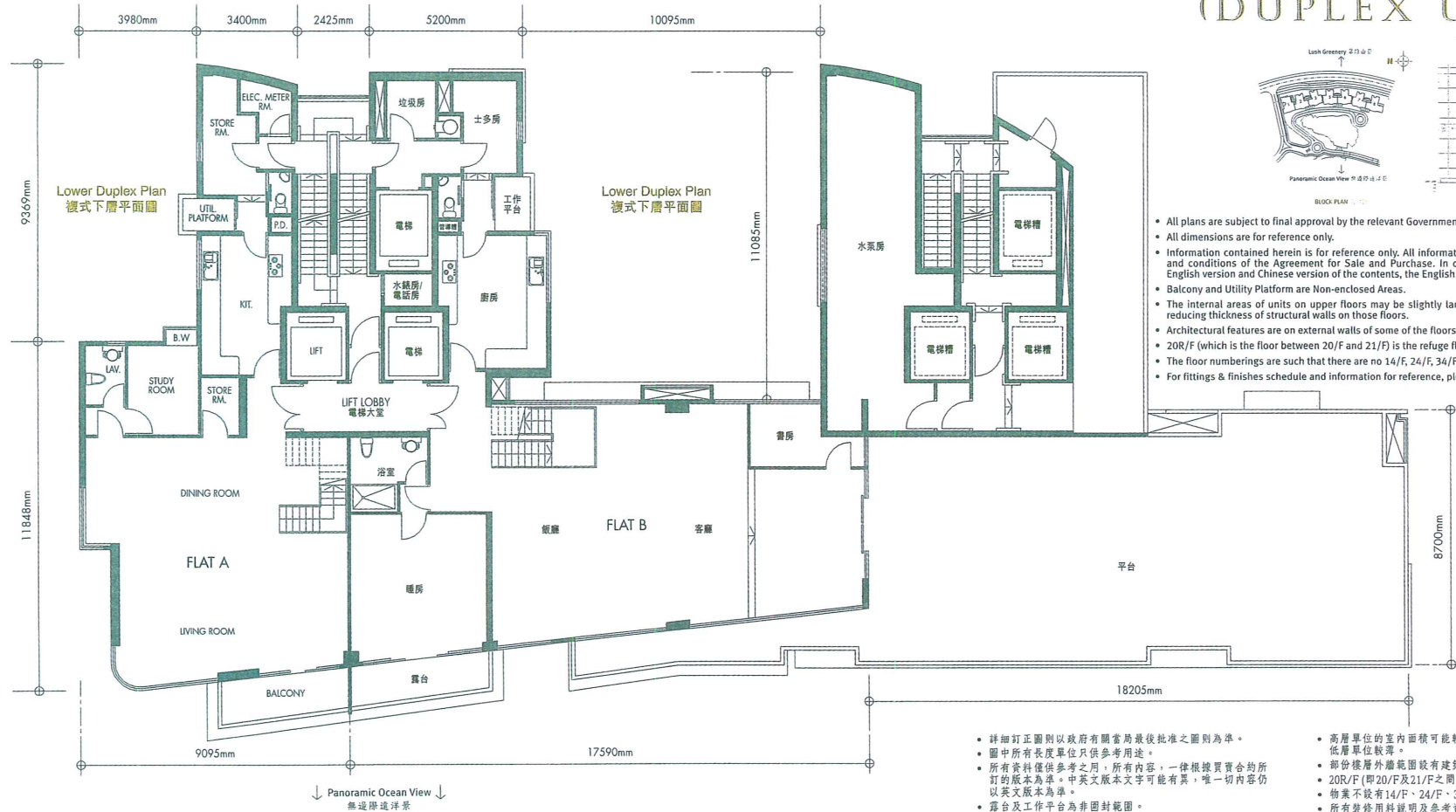
TOWER 7 46/F (DUPLIX UNIT & APEX UNIT)



- All plans are subject to final approval by the relevant Government Authorities.
- All dimensions are for reference only.
- Information contained herein is for reference only. All information shall be subject to the terms and conditions of the Agreement for Sale and Purchase. In case of any conflict between the English version and Chinese version of the contents, the English version shall prevail.
- Balcony and Utility Platform are Non-enclosed Areas.
- The internal areas of units on upper floors may be slightly larger than lower floors due to the reducing thickness of structural walls on those floors.
- Architectural features are on external walls of some of the floors.
- 20R/F (which is the floor between 20/F and 21/F) is the refuge floor.
- The floor numberings are such that there are no 14/F, 24/F, 34/F and 44/F.
- For fittings & finishes schedule and information for reference, please refer to the sales brochure.

- 詳細訂正圖則以政府有關當局最後批准之圖則為準。
- 圖中所有長度單位只供參考用途。
- 所有資料僅供參考之用，所有內容，一律根據買賣合約所訂的版本為準。中英文版本文字可能有異，唯一內容仍以英文版本為準。
- 露台及工作平台為非圍封範圍。
- 高層單位的室內面積可能較低層單位稍大，因其結構牆比低層單位較薄。
- 部份樓層外牆範圍設有建築裝飾。
- 20R/F (即20/F及21/F之間)為避火層。
- 物業不設14/F、24/F、34/F及44/F之樓層。
- 所有裝修用料說明及參考資料，請參閱售樓書。

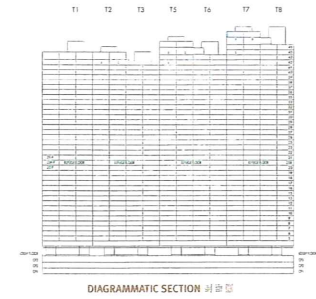
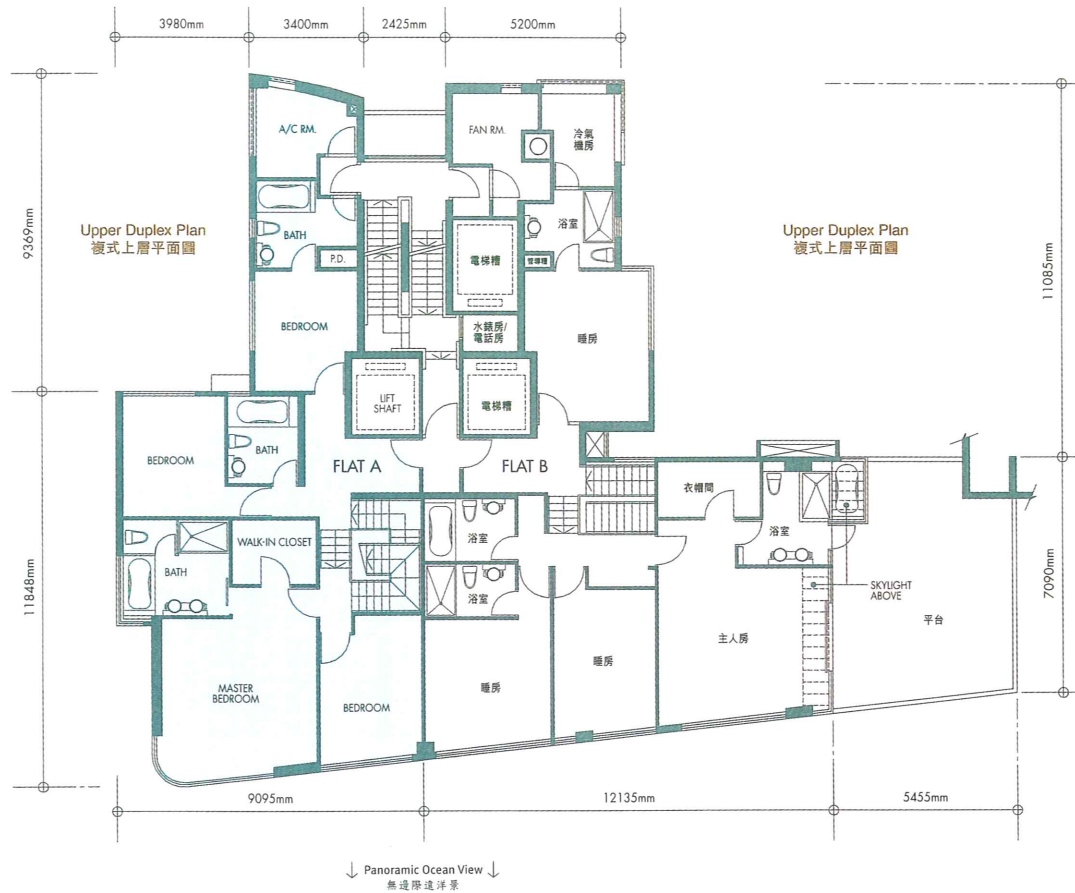
TOWER 7 47/F (DUPLIX UNITS)



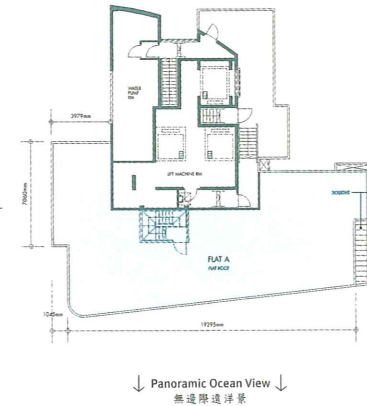
- All plans are subject to final approval by the relevant Government Authorities.
- All dimensions are for reference only.
- Information contained herein is for reference only. All information shall be subject to the terms and conditions of the Agreement for Sale and Purchase. In case of any conflict between the English version and Chinese version of the contents, the English version shall prevail.
- Balcony and Utility Platform are Non-enclosed Areas.
- The internal areas of units on upper floors may be slightly larger than lower floors due to the reducing thickness of structural walls on those floors.
- Architectural features are on external walls of some of the floors.
- 20R/F (which is the floor between 20/F and 21/F) is the refuge floor.
- The floor numberings are such that there are no 14/F, 24/F, 34/F and 44/F.
- For fittings & finishes schedule and information for reference, please refer to the sales brochure.

- 詳細正圖則以政府有關當局最後批准之圖則為準。
- 圖中所有長度單位只供參考用途，一律根據買賣合約所訂的版本為準。中英文版本文字可能有異，唯一內容仍以英文版本為準。
- 露台及工作平台為非固封範圍。
- 高層單位的室內面積可能較低層單位稍大，因其結構比低層單位較薄。
- 部份樓層外牆範圍設有建築裝飾。
- 20R/F (即20/F及21/F之間)為避火層。
- 物業不設14/F、24/F、34/F及44/F之樓層。
- 所有裝修用料說明及參考資料，請參閱售楼書。

TOWER 7 48/F (DUPLIX UNITS)



48/F ROOF PLAN
48/F 天台平面圖



- All plans are subject to final approval by the relevant Government Authorities.
- All dimensions are for reference only.
- Information contained herein is for reference only. All information shall be subject to the terms and conditions of the Agreement for Sale and Purchase. In case of any conflict between the English version and Chinese version of the contents, the English version shall prevail.
- Balcony and Utility Platform are Non-enclosed Areas.
- The internal areas of units on upper floors may be slightly larger than lower floors due to the reducing thickness of structural walls on those floors.
- Architectural features are on external walls of some of the floors.
- 20R/F (which is the floor between 20/F and 21/F) is the refuge floor.
- The floor numberings are such that there are no 14/F, 24/F, 34/F and 44/F.
- For fittings & finishes schedule and information for reference, please refer to the sales brochure.
- 詳細訂正圖則以政府有關當局最後批准之圖則為準。
- 圖中所有長度單位只供參考用途。
- 所有資料僅供參考之用，所有內容，一律根據買賣合約所訂的版本為準。中英文版本文字可能有異，唯一內容仍以英文版本為準。
- 露台及工作平台為非圍封範圍。
- 高層單位的室內面積可能較低層單位稍大，因其結構比低層單位較薄。
- 部份樓層外牆範圍設有建築裝飾。
- 20R/F (即20/F及21/F之間)為避火層。
- 物業不設有14/F、24/F、34/F及44/F之樓層。
- 所有裝修用料說明及參考資料，請參閱售樓書。